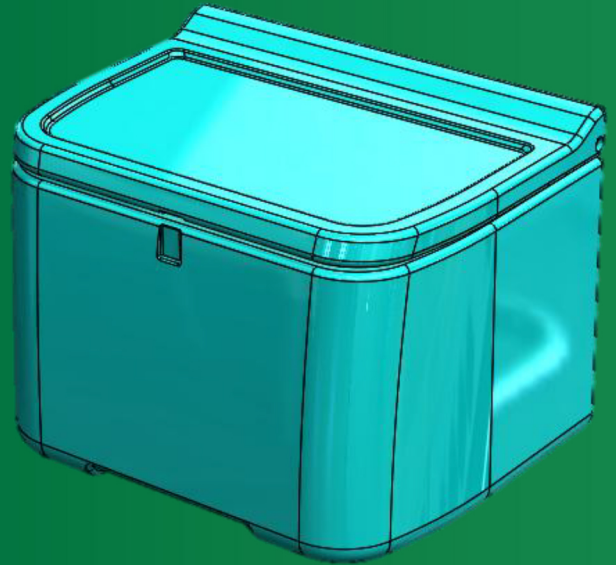




## BIKE BOX



### MATERIAL & DURABILITY

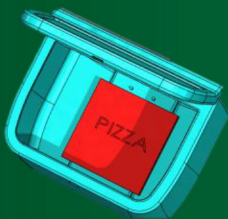
- ✚ Heavy-duty, impact-resistant plastic
- ✚ Waterproof and weather-resistant
- ✚ Resistant to mould and odours
- ✚ Long lifespan, reusable design
- ✚ Low maintenance with replacement parts available (hinges, seals)

### CUSTOMIZATION & BRANDING

- ✚ Colour options available

### Capacity & Size

Spacious interior for multiple or bulky items.  
Compact build maintains bike balance and handling



### Safety & Security

Tight-sealing lid to block rain, dust, and road spray.

Lockable lid with robust mechanism/hasp (padlock compatible)

### Business Value

Designed for daily delivery operations.  
Excellent long-term investment for businesses

### User Comfort & Handling

Lightweight construction for easy handling and manoeuvrability.

Smooth edges to avoid injury or snagging clothing.

Secure mounting system for standard rear racks or custom brackets.

### Hygiene & Maintenance

Smooth interior surfaces for easy cleaning.

Suitable for transporting food and sensitive items.

Resistant to odours and mould buildup.

### Dimensions

700mm x 550mm x 530mm (LWH)

Note: - The information contained in this document provides details of the product. Customers need to evaluate the product to determine application suitability for use prior to purchasing. The colors shown may differ from the actual product manufactured, this batch-to-batch variations will fall within the allowable industry standard. Talk to your Kaymac sales representative or the technical team member if you are not sure.